

PRODUCT DATASHEET

ST8V-EM 16 W/6500K 1200 mm

SubstiTUBE Value | Economic LED tubes for electromagnetic control gears (CCG)



AREAS OF APPLICATION

- General illumination within ambient temperatures from -20...+45 °C
- Corridors, stairways, parking garages
- Industry
- Warehouses
- Cooling and storage rooms
- Warehouses
- Domestic applications
- Supermarkets and department stores

PRODUCT BENEFITS

- No bending thanks to glass technology
- Energy savings of up to 65 % (compared to T8 fluorescent lamp on CCG)
- Quick, simple and safe replacement without rewiring
- Instant-on light, therefore ideally suitable in combination with sensor technology
- Very high resistance to switching loads
- Also suitable for operation at low temperatures

PRODUCT FEATURES

- LED replacement for classic T8 fluorescent lamps with G13 socket for use in CCG luminaires or on AC mains
- Uniform illumination
- Mercury-free and RoHS compliant
- Single and tandem operation on conventional control gear (0.6 m version)
- Tube made of glass



TECHNICAL DATA

Electrical data

Rated wattage	16.00 W
Nominal voltage	230 V
Nominal wattage	16.00 W
Nominal current	0.12 A
Type of current	AC
Power factor λ	> 0.50

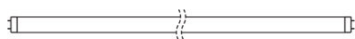
Photometrical data

Rated color temperature	6500 K
Nominal luminous flux	1800 lm
Rated luminous flux	1800 lm
Lumen main.fact.at end of nom.life time	0.70
Light color (designation)	Daylight
Color temperature	6500 K
Luminous flux	1800 lm
Luminous efficacy	112 lm/W
Color rendering index Ra	≥80
Standard deviation of color matching	≤6 sdcn

Light technical data

Starting time	< 0.5 s
Rated beam angle (half peak value)	160.00 °

Dimensions & weight



Tube diameter	27.5 mm
Base diameter	25.7 mm
Product weight	190.00 g

Overall length	1214 mm
-----------------------	---------

Temperatures & operating conditions

Ambient temperature range	-20...+50 °C
----------------------------------	--------------

Lifespan

Nominal lamp life time	30000 h
Rated lamp life time	30000 h
Number of switching cycles	50000

Additional product data

Base (standard designation)	G13
Mercury-free	Yes

Capabilities

Dimmable	No
-----------------	----

Certificates & standards

Type of protection	IP20
Standards	CE

Country-specific categorizations

Order reference	ST8V-1.2M 16W/8
------------------------	-----------------

Logistical data

Temperature range at storage	-20...+80 °C
-------------------------------------	--------------

EQUIPMENT / ACCESSORIES

- Suitable for operation with low-loss and conventional control gears

SAFETY ADVICE

Not suitable for operation with electronic control gear.

The Tc Point is located underneath the product label on the front side of the lamp.

Operation in outdoor applications in suitable damp-proof luminaires possible according to data sheet and installation instruction.

LOGISTICAL DATA

Product code	Packaging unit (Pieces/Unit)	Dimensions (length x width x height)	Gross weight	Volume
4058075052147	Sleeves 1	1285 mm x 28 mm x 28 mm	234.00 g	1.01 dm ³

4058075052154	Shipping carton box 25	1310 mm x 155 mm x 160 mm	6663.00 g	32.49 dm ³
4058075100275	Sleeves 2	1259 mm x 54 mm x 27 mm	508.00 g	1.84 dm ³
4058075100282	Shipping carton box 50	272 mm x 187 mm x 1255 mm	11629.00 g	63.83 dm ³
4058075493667	Sleeves 1	1270 mm x 28 mm x 28 mm	234.00 g	1.00 dm ³
4058075493674	Shipping carton box 25	1322 mm x 158 mm x 176 mm	7218.00 g	36.76 dm ³

The mentioned product code describes the smallest quantity unit which can be ordered. One shipping unit can contain one or more single products. When placing an order, for the quantity please enter single or multiples of a shipping unit.

REFERENCES / LINKS

For current information see

► www.ledvance.com/substitute

LEGAL ADVICE

When used to replace a T8 fluorescent lamp the total energy efficiency and light distribution depends on the design of the lighting system.

DISCLAIMER

Subject to change without notice. Errors and omission excepted. Always make sure to use the most recent release.